



Prevention Research Center
FOR THE PROMOTION OF HUMAN DEVELOPMENT



PENNSYLVANIA
COMMISSION ON CRIME AND DELINQUENCY

Communities That Care: Diffusion of Research-Based Prevention in Pennsylvania

Investigators:

Mark Feinberg
Mark Greenberg
Louis Brown
Damon Jones
Brittany Rhodes
Brian Bumbarger

Collaborative Policy Innovators:

Mike Pennington
Clay Yeager

PA Communities That Care

1994 PCCD releases first CTC funding announcement

1 year planning

3 years program implementation

Later: Additional “sustainability” funding available

132 CTC Sites have gone through training

**Persisted through 3 Governors, 5 Presidential terms,
& PRC’s first decade**



- Project of the Prevention Research Center
- Funding from the Pennsylvania Commission on Crime and Delinquency (PCCD) and the Pennsylvania Department of Public Welfare (DPW)
- Supports the dissemination, implementation, sustainability, and impact assessment of evidence-based prevention and intervention programs
- Conducts original translational research to advance the science and practice of evidence-based prevention.

EpisCenter and CTC

- Supports regional "coalitions of coalitions" using quarterly meetings to offer topical training
- Statewide Coalition Leadership Institute (1 day training)
- For new CTC coalitions, EpisCenter provides:
 - Key Leader Orientation
 - Community Board Orientation
 - Risk and Resource Assessment training
 - Community planning and implementation training

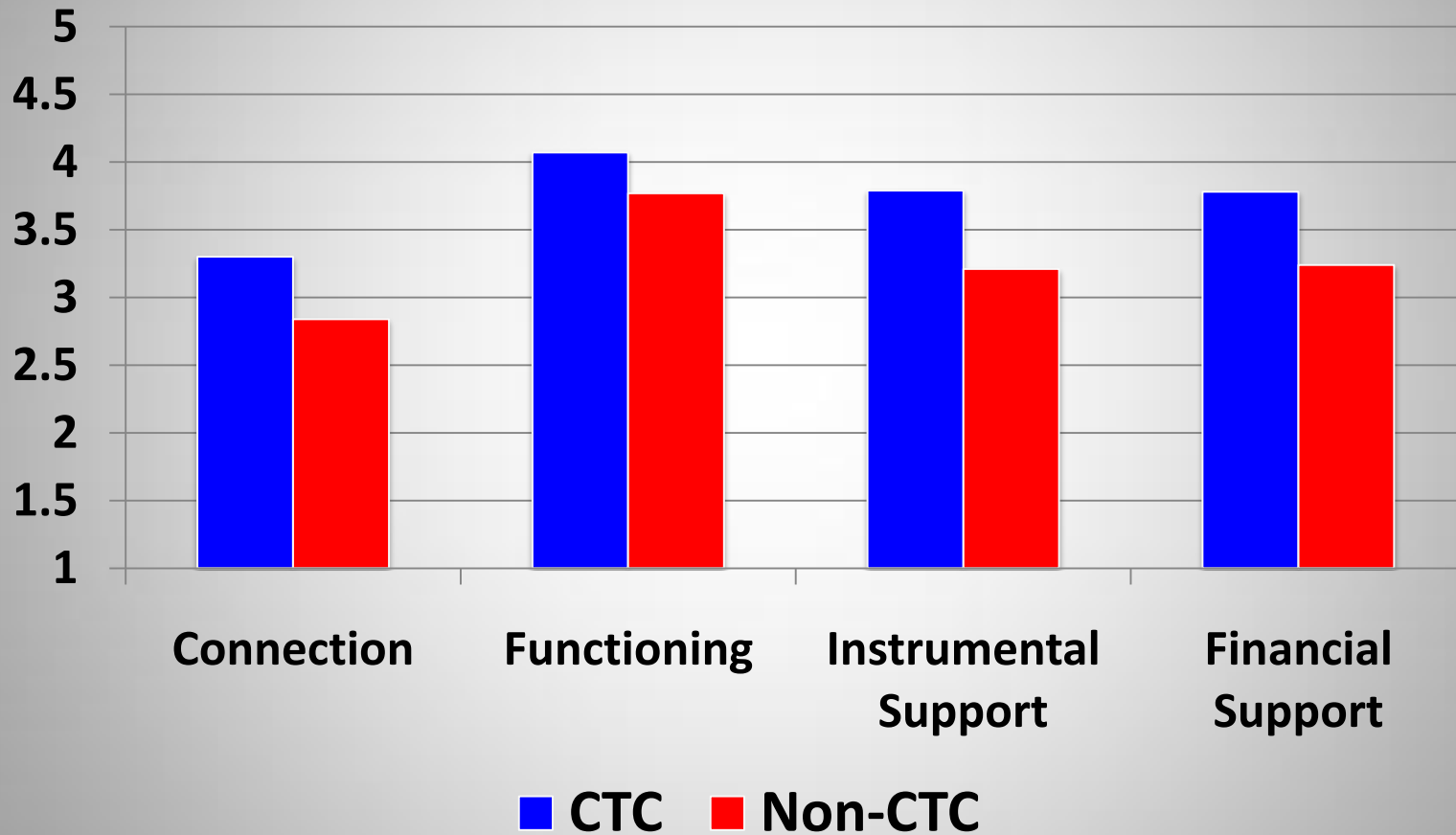
New CTC Sites

- 7 new CTC coalitions that began in January of 2010
- Currently funded for 18 months (approx. 100K) to go through CTC training process
- After training, apply for PCCD funding (approx. 250K) to implement programs selected through the CTC process and reassess R/P factors and outcomes

Pennsylvania's "Blueprints" Initiative

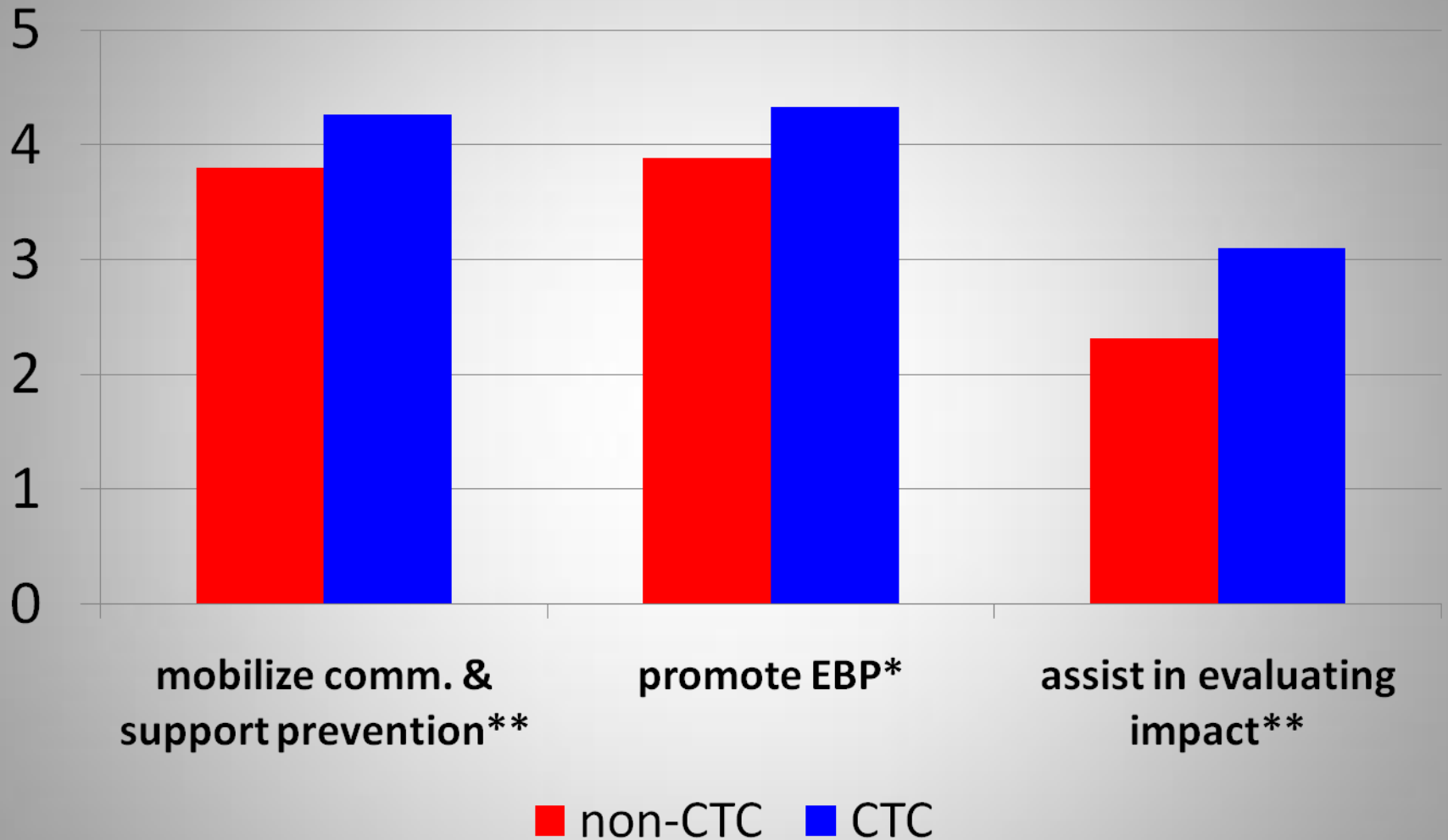
- Complements CTC initiative
- EPISCenter provides technical assistance
- Nearly 200 EBP's funded since 1998 (+~200 through other sources)
- Big Brothers/Sisters, LifeSkills Training, Strengthening Families, PATHS, Multisystemic Therapy, Olweus Bullying Program, Incredible Years, TND, FFT, MTFC
- Required to have coalition support for implementation (can be CTC coalition)

Coalition Effectiveness in CTC and Non-CTC Coalitions



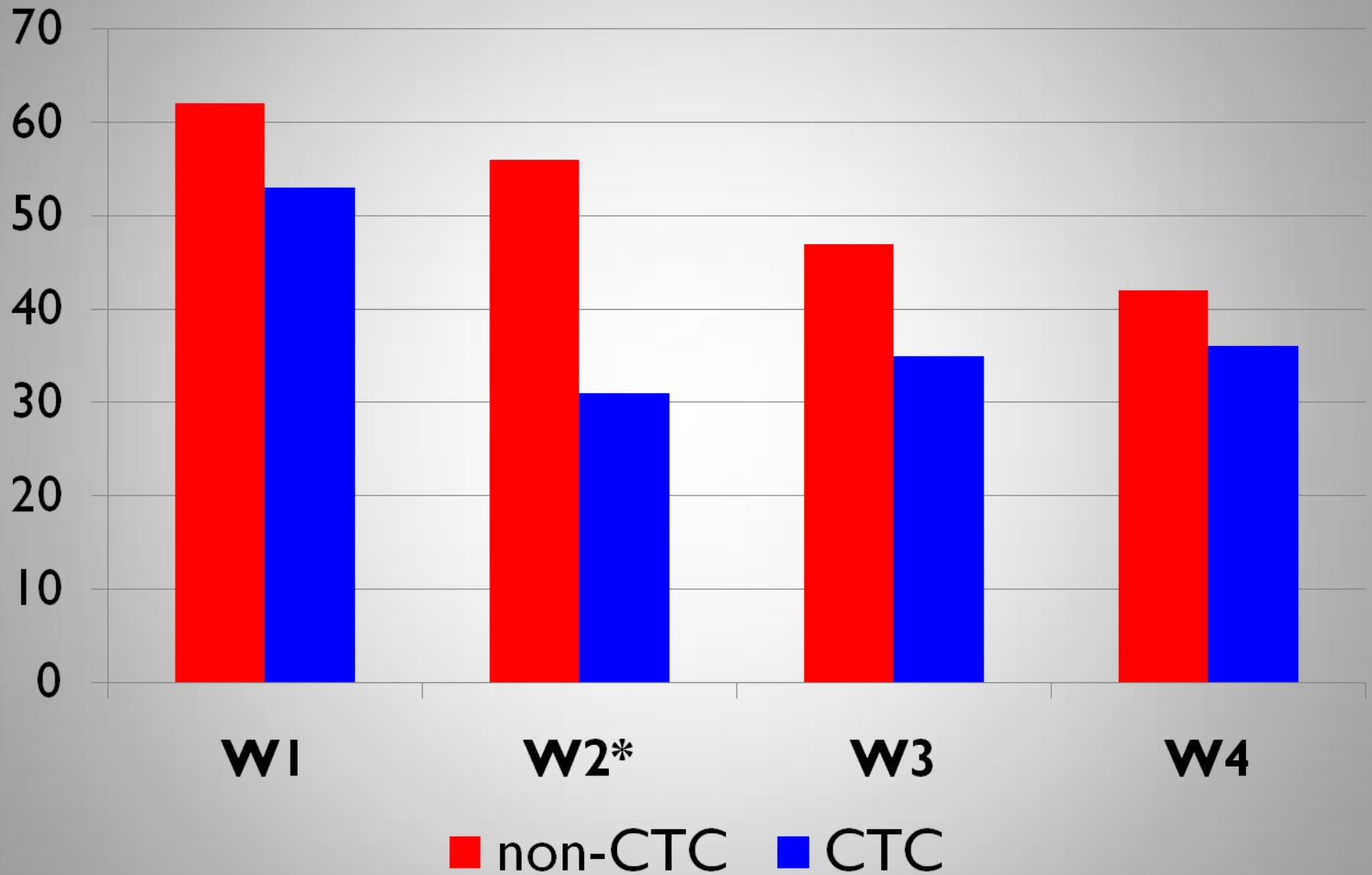
Note: Differences significant at $p < .05$

To what extent does your coalition...



ANOVA: **p < .01; *p < .05

Have you adapted your program...



χ^2 * $p < .05$

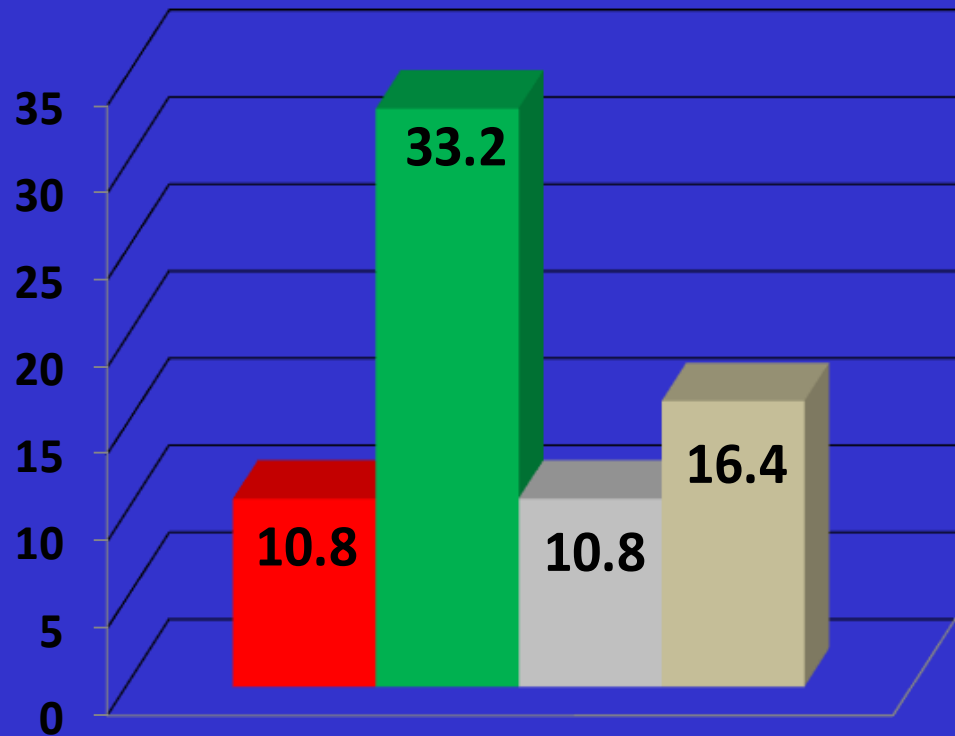
New Publications

- Feinberg, M. E., Jones, D., Greenberg, M. T., Osgood, D. W., & Bontempo, D. (2010). Effects of the Communities That Care model in Pennsylvania on change in adolescent risk and problem behaviors. *Prevention Science, 11*, 163-171.
- Brown, L. D., Feinberg, M. E., & Greenberg, M. T. (in press). Determinants of community coalition ability to support evidence-based programs. *Prevention Science*.

5 year Longitudinal Study of PA Youth

Research following 419 age-grade cohorts over a 5-year period found youth in CTC communities using EBPs had significantly lower rates of delinquency, greater resistance to negative peer influence, stronger school engagement and better academic achievement

% Improvement of CTC/EBP Youth Over Comparison Group



■ Delinquency

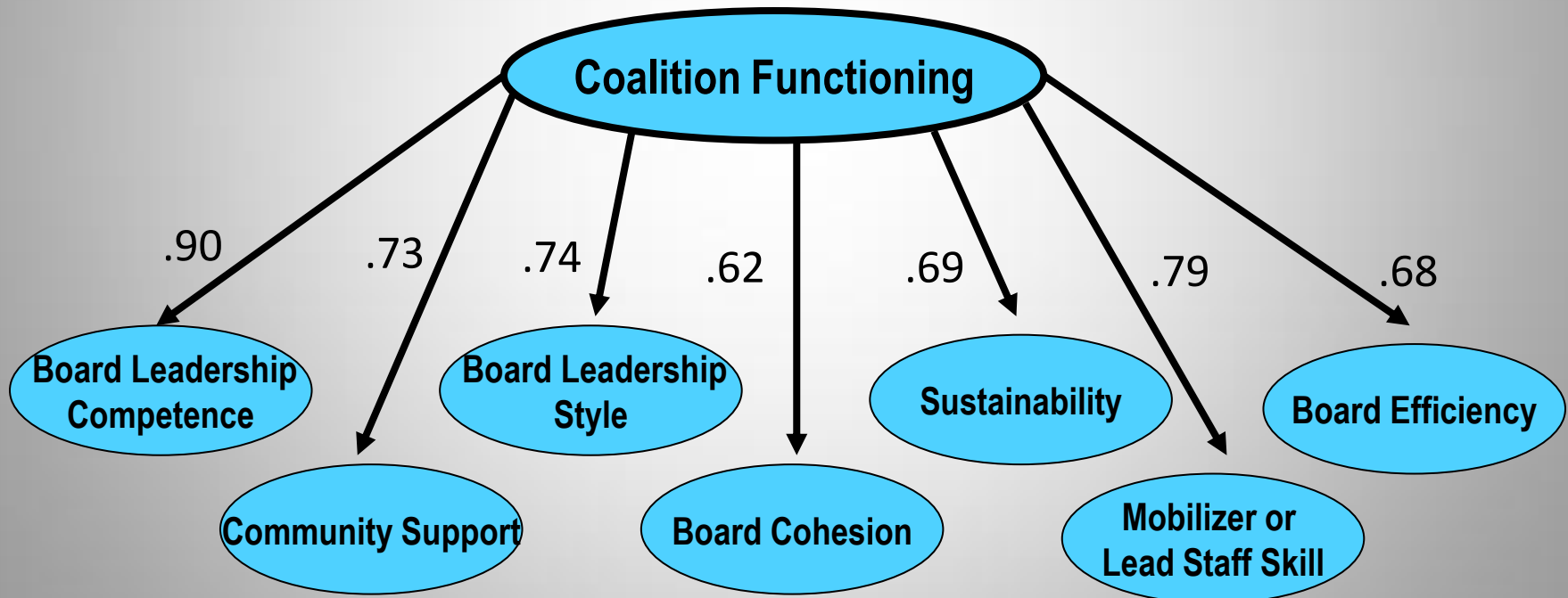
■ Academic Performance

■ < Negative Peer Influence

■ School Engagement

Hierarchical confirmatory factor analysis model of coalition functioning

Model Fit: CFI = .95; TLI = .94; RMSEA = .06;

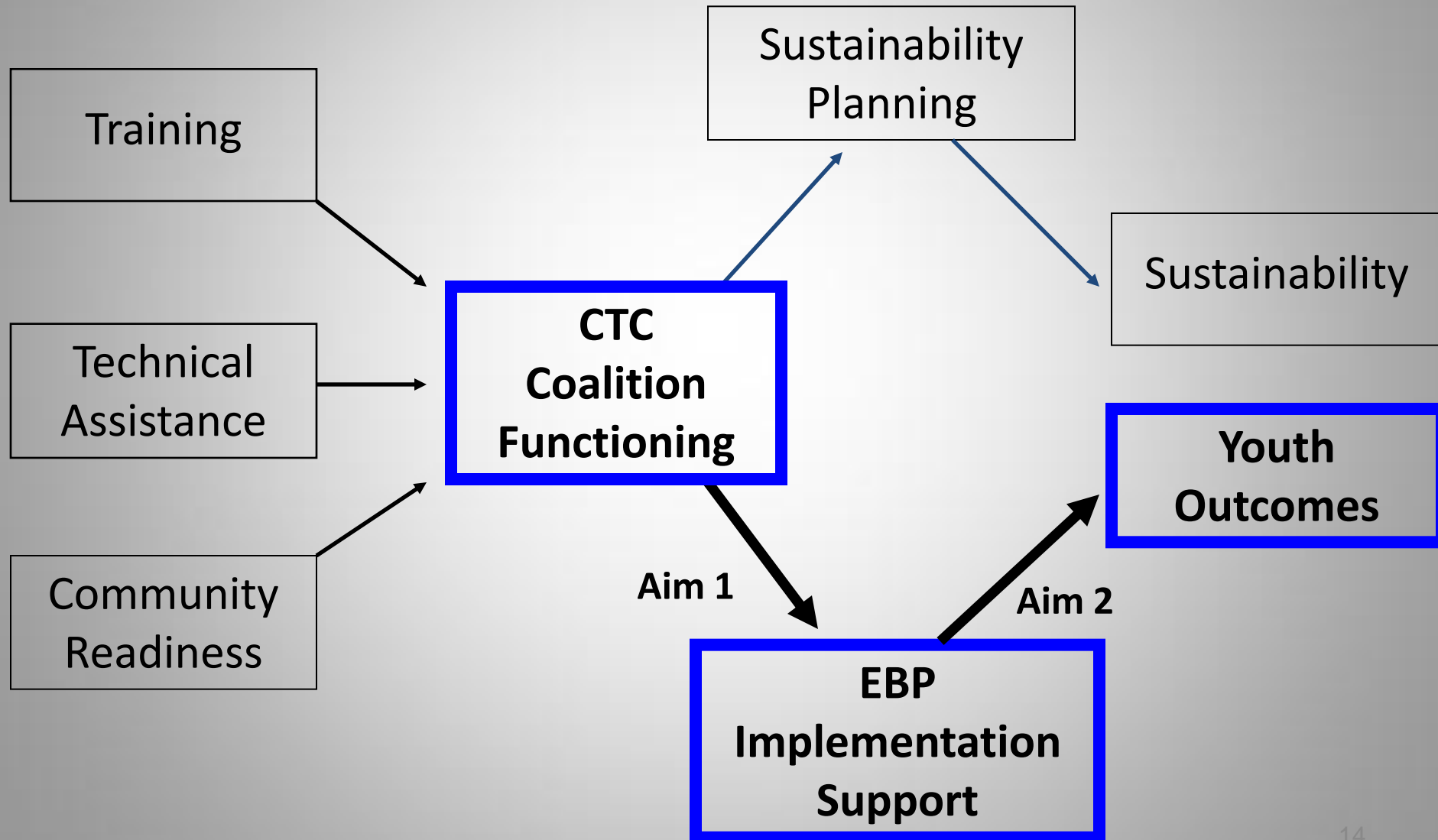


Hierarchical confirmatory factor analysis model of coalition functioning

- Factor loadings stable across time
 - Wald test of parameter constraints = 14.1, $p = .36$
- Higher order coalition functioning construct adequately describes intercorrelations between the first order factors
 - Higher-order TLI = .99
- Poor model fit when using only coalition functioning to represent intercorrelations between the 20 items
 - CFI = .66; TLI = .62; RMSEA = .14;
- Future research can examine the influence of both overall coalition functioning and its subcomponents on indicators of coalition effectiveness

NIDA R03

Theoretical Model of Communities That Care



EBP Implementation Support

- Coalition leaders report on the extent of implementation support coalition provides for specific EBPs
- Level of involvement in supporting EBPs
- Level of fidelity support available for each EBP
 - Availability of certified training
 - Availability of ongoing training and technical assistance
 - Amount of fidelity monitoring

Youth Outcomes

- Past 30-day use of ATOD
- Fighting, suspension, being arrested, and selling drugs
- Risk and protective factors for substance use and delinquency
- CTC Youth Survey assesses 90,000 6th-12th graders in 160 PA school districts biennially

Thank You!

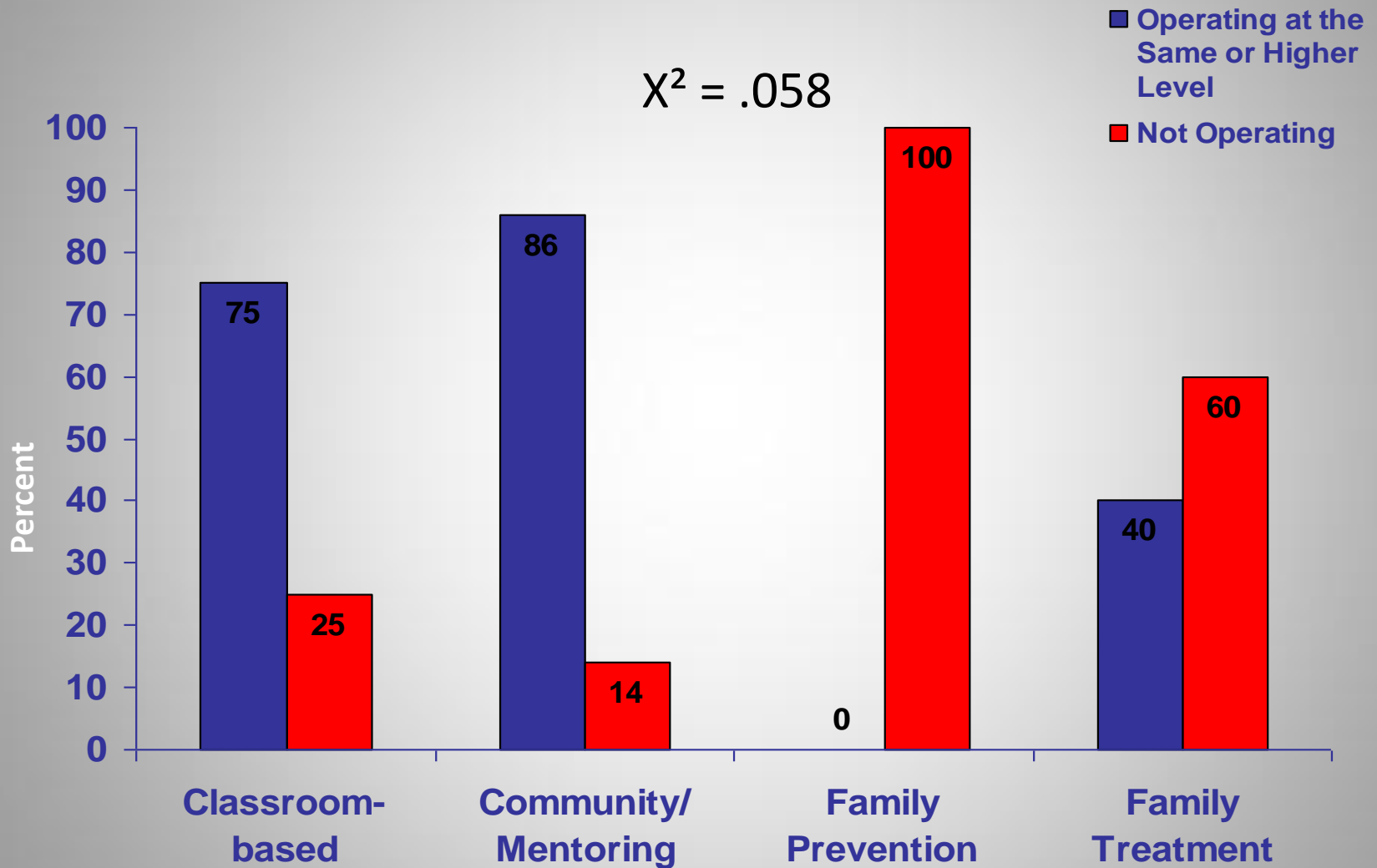
Louis D. Brown
Prevention Research Center
Penn State University
402 Marion Place
State College, PA 16801
ldb12@psu.edu
(814) 865-4122
www.prevention.psu.edu

PENNSSTATE



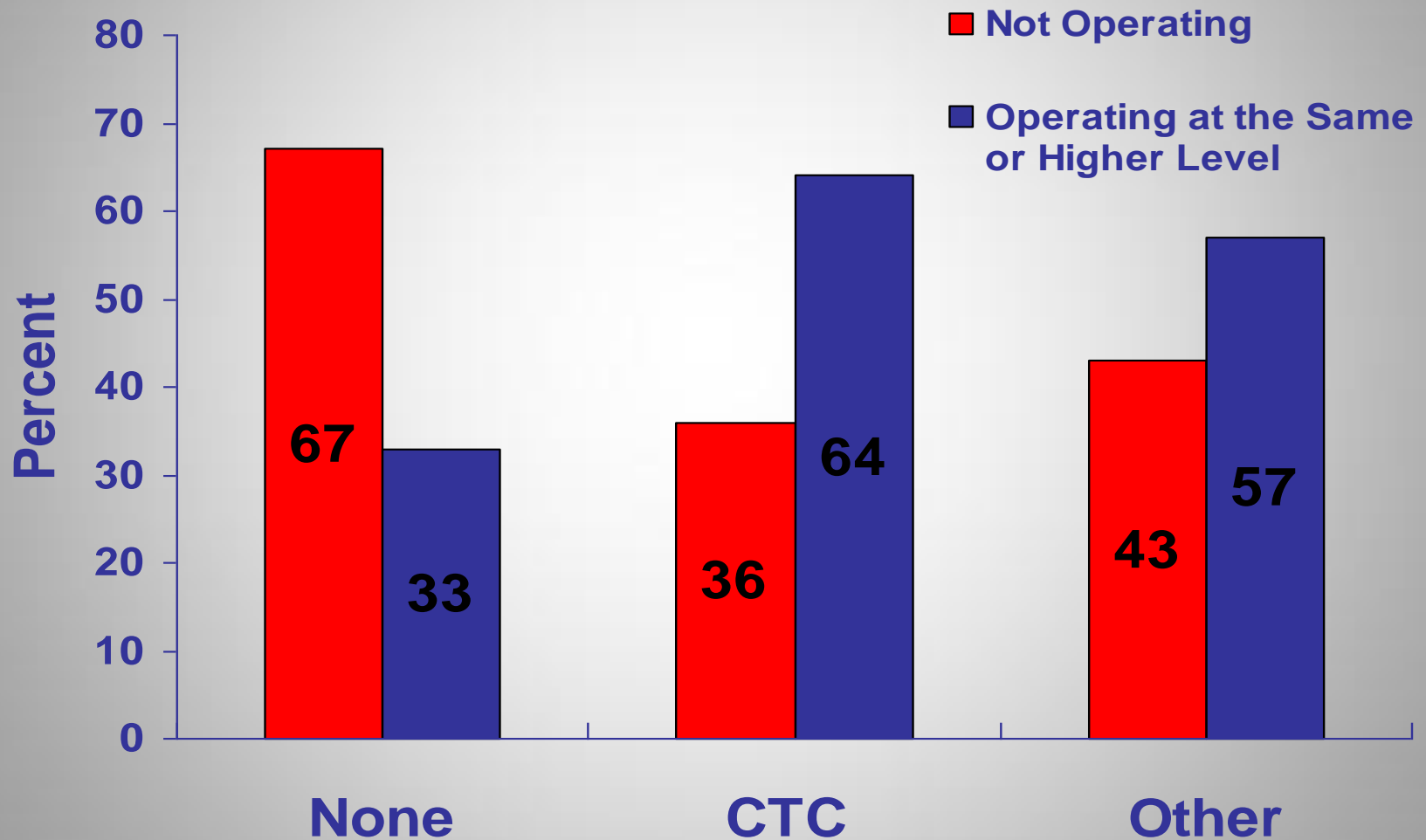
Variable name	Num. items	Reliability 95% C.I.	(1)	(2)	(3)	(4)	(5)	(6)	(7)
(1) Coalition Functioning	20	.92 - .94	-						
(2) Community Support	4	.72 - .79	.73	-					
(3) Board Cohesion	2	.55 - .73	.62	.45	-				
(4) Board Leadership Style	2	.72 - .82	.74	.54	.45	-			
(5) Lead. Competence	3	.60 - .74	.90	.67	.55	.66	-		
(6) Mobilizer Skill	4	.77 - .85	.79	.58	.49	.58	.71	-	
(7) Board Efficiency	2	.70 - .83	.68	.50	.42	.50	.61	.54	-
(8) Sustainability	3	.69 - .77	.69	.51	.43	.51	.62	.55	.47

Are Some Programs More Difficult to Sustain?



N = 19; Grantees off of funding 2 or more years

Does Connection to a Community Coalition Increase Sustainability?



N = 24; Grantees off of funding 2 or more years