

INVESTING FOR IMPACT

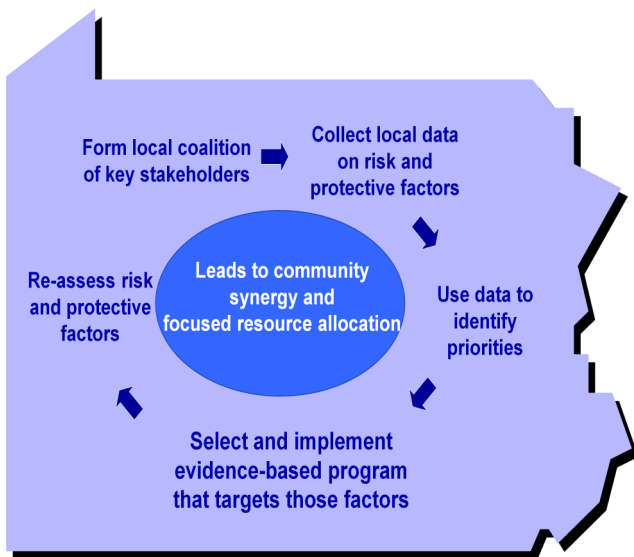
PROVIDING FOR PROVEN POSITIVE YOUTH DEVELOPMENT

Promote a future of protection, productivity, & possibility for all Pennsylvanians!



COMMUNITIES THAT CARE (CTC)

— THE CTC PROCESS: DATA-DRIVEN, COMMUNITY-LEVERAGED, PROVEN PREVENTION —



- The Communities That Care Model (CTC) of risk-focused prevention has recently been proven effective at preventing and reducing crime and drug use.
- This evidence comes both from a multi-state randomized controlled trial (the most rigorous type of scientific evaluation) and a from a 5-year longitudinal study conducted in 419 Pennsylvania classrooms that included almost 100,000 youth.
- This longitudinal study conducted between 2001 and 2005 included 231,000 youth reports showed the following results for youth in CTC communities:

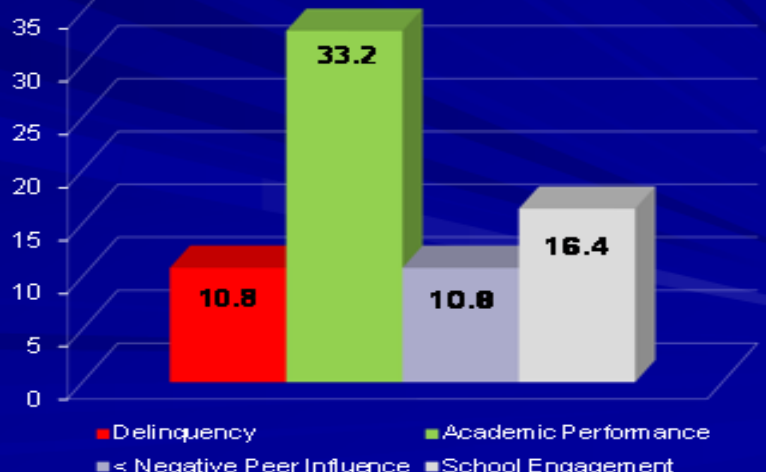


- **11%** less delinquency
- **33%** better academic achievement
- **16%** greater school engagement
- **11%** less antisocial peer influences



5 year Longitudinal Study of PA Youth

% Improvement of CTC Youth Over Comparison Group



For more information contact the Evidence-based Prevention and Intervention Support Center (EPISCenter) at 814-863-2568 or EPISCenter@psu.edu.